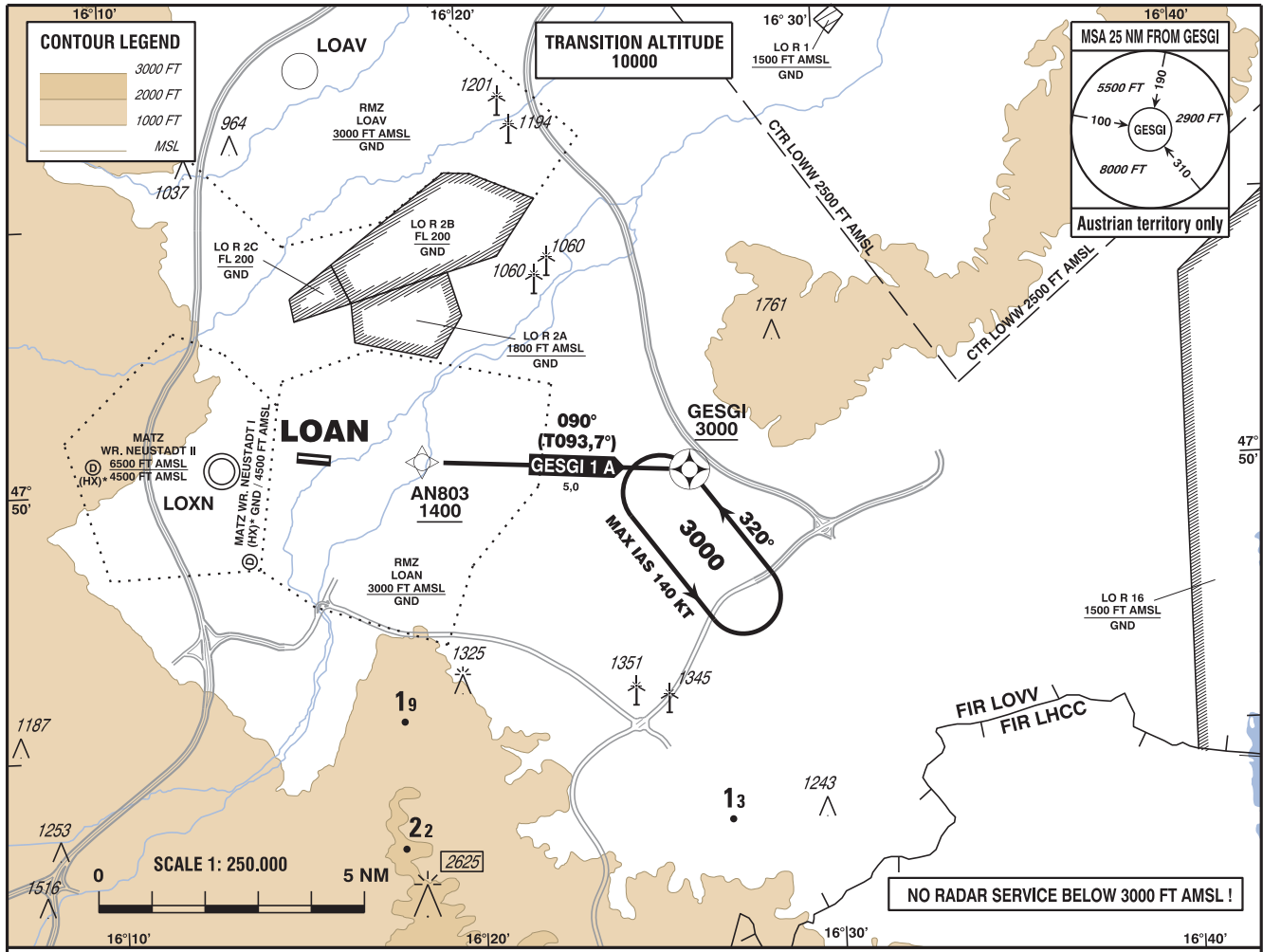


**STANDARD DEPARTURE
CHART - INSTRUMENT
(SID) - ICAO**

DELIVERY	118.230 MHZ
WIEN RADAR	134.675 MHZ
TFI	118.525 MHZ
WR. NEUSTADT OST AD	122.655 MHZ

WR. NEUSTADT/OST
ÖSTERREICH AUSTRIA

VAR 4° E



CHANGE: AD FRQ.; EDITORIAL

- GNSS required
- RNAV 1 or P-RNAV approval required

BEARINGS AND TRACKS ARE MAGNETIC

TRACKS IN BRACKETS ARE TRUE

ALTITUDES, ELEVATIONS AND HEIGHTS ARE IN FEET

DISTANCES ARE IN NM

Departing from LOAN only allowed as VFR flight, IFR starts, when passing AN803 and 1400 FT AMSL or above

IFR procedure partly within airspace class G

Operating as IFR flight along SID subject to ATC clearance

Obtain clearance on FRQ 118.230 MHZ

Flights shall comply with the rules of RMZ and contact ATC when passing AN803

Designator	Route	After Take-Off		Remarks
		Climb to ..initially	Expect FREQ	
GESGI 1 A Gesgi one alfa departure	AN803 - GESGI	By ATC	WIEN RADAR 134.675 MHZ	Climb gradient at least 5,2% (320 FT/ NM).

Contact WIEN RADAR when passing AN803

RNAV SID Coding Table of GESGI 1 A

Path Terminat or	Waypoint			Course/ Track ° MAG (° True)	DIST NM	Turn Direction	Constraints		Navigation Specification	Remarks
	Identifier	Flyover	Coordinates				Level	Speed		
IF	AN803		N475027.23 E0161838.42				A1400+		RNAV 1	
TF	GESGI	yes	N475007.54 E0162606.57	090° (093.7°)	5.0		A3000+		RNAV 1	

RNAV Holding

Holding Point	Inbound Track ° True	Inbound Track ° MAG	Turn Direction	MAX IAS	Minimum Holding Altitude FT MSL / FL	Time	DIST NM	Remarks
GESGI	323.8°	320°	left	K140-	A3000	1 MIN		