

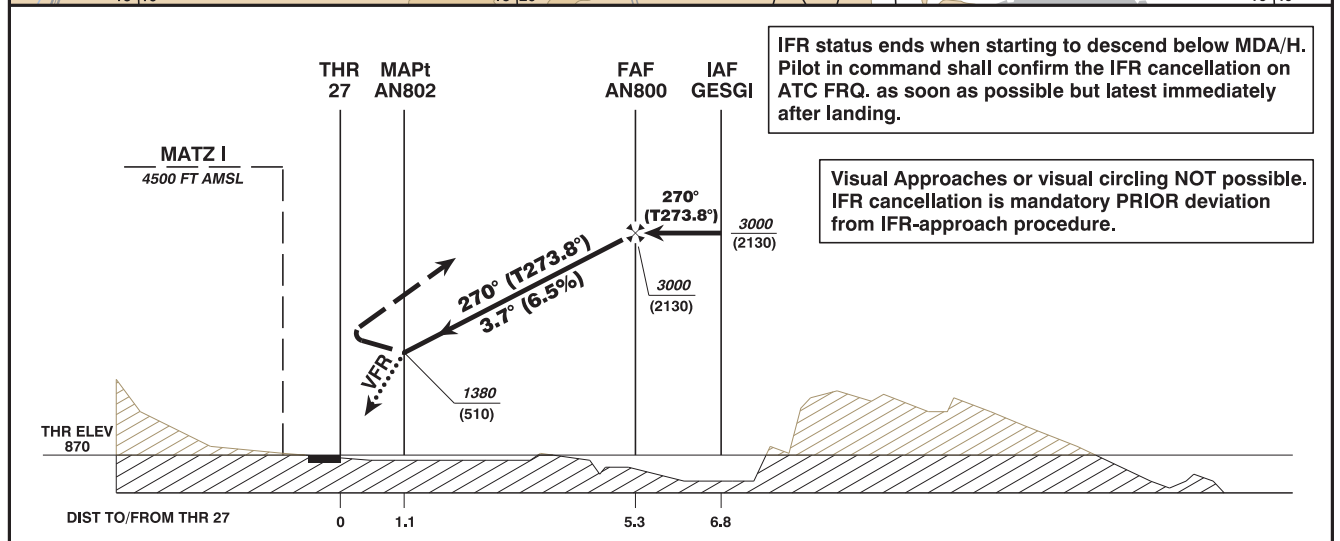
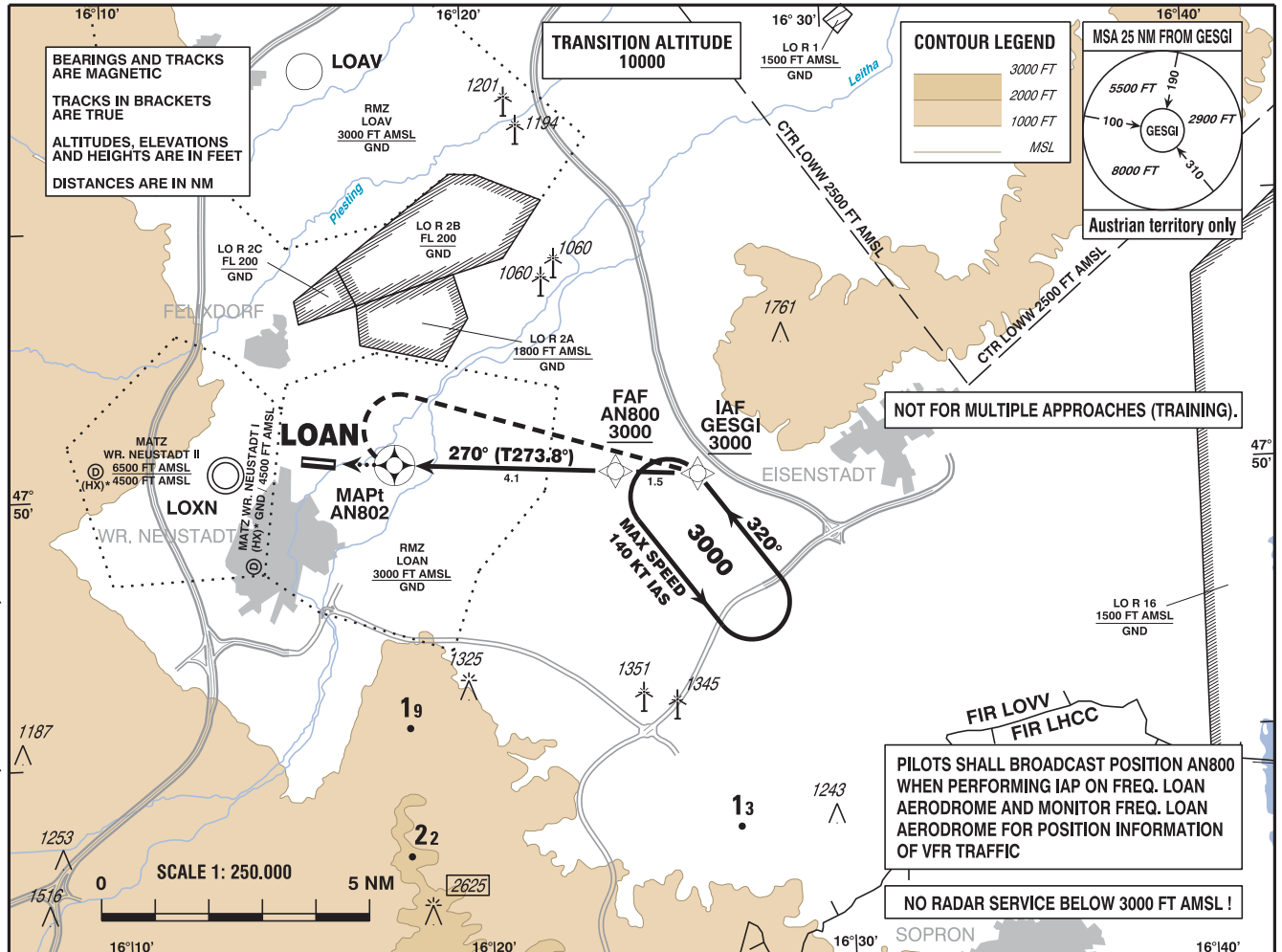
INSTRUMENT APPROACH CHART

VAR 4° E

AD ELEV 896 FT
THR 27 ELEV 870 FT
HGT RELATED TO THR ELEV

RADAR
TFI 134.675 MHZ
WR. NEUSTADT OST AD 118.525 MHZ
122.655 MHZ

WR. NEUSTADT/OST
ÖSTERREICH AUSTRIA
RNAV (GNSS) 270
CAT A / B



MISSED APPROACH: AT AN802 TURN RIGHT TO GESGI; CLIMB 3000 FT AMSL AND HOLD.

NOTE: MISSED APPROACH SPEED LIMITED TO MAX IAS 140 KT.

MDA (MDH) IN FT	A	B	AN800 to AN802 - DISTANCE 4.1 NM (Timing not authorized for defining the MAPt)					
			GS (KT)	80	100	120	140	
LNAV	1380 (510)		AN800 - AN802	MIN : SEC	3:04	2:28	2:03	1:45
			Rate of descent (6,5%)	FT / MIN	530	660	790	920
VFR PART: SEE CHART FOR VFR FLIGHTS (LOAN AD 2.24-7-2)			DIST in NM to AN802	4	3	2		
			ALT (HEIGHT)	2950 (2080)	2560 (1690)	2160 (1290)		

Instrument Approach Procedure Coding Table Wr. Neustadt/Ost RNAV (GNSS) 270											
Path Terminator	Waypoint				Course/Track ° MAG (° True)	DIST NM	Turn Direction	Constraints		Navigation Specification	Remarks
	Identifier	Type	Flyover	Coordinates				Level	Speed		
IF	GESGI	IAF	no	N475007.54 E0162606.57				A3000+		RNP APCH	
TF	AN800	FAF	no	N475013.59 E0162350.25	270° (273.8°)	1.5		A3000+		RNP APCH	
TF	AN802	MAPt	yes	N475029.62 E0161743.31	270° (273.8°)	4.1				RNP APCH	
DF	GESGI	MAHF	yes	N475007.54 E0162606.57			right		K140-	RNP APCH	
RNAV Holding											
Holding Point	Inbound Track ° True	Inbound Track ° MAG	Turn Direction	MAX IAS	Minimum Holding Altitude FT MSL / FL	Time	DIST NM	Remarks			
GESGI	323.8°	320°	left	K140-	A3000	1 MIN					
THR Coordinates											
RWY 09	N475038.00 E0161511.00										
RWY 27	N475034.00 E0161602.00										